

ITEM	DESCRIPTION	QTY.	PAGE
A	TRACK (SDH) - 78 - TB	1	2
B	HANGER (SDH) - STD	2	5
C	ADJUSTABLE SPACER (MALE-FEMALE) (SDH)	4	6
D	DOOR STOP (SDH) - TB	2	7
E	DOOR C GUIDE (SDH) - TB	1	8
F	ANTI-JUMP DEVICE (SDH)	2	9
G	DOOR HARDWARE KIT	1	10

ALL ITEMS DESIGNATED BY LETTER MUST BE PROVIDED IN AN INDIVIDUAL SEALED PLASTIC BAG

UNFOLD STEEL STATE PARTS CAN BE DELIVERED AS .dxf FORMAT FOR CUTTING PROCESS

REVISIONS			
REV.	DESCRIPTION	DATE	INIT.
1	ITEMS ZINC PLATED IN HANGER (ITEM 2) ARE NOW BLACK / HANDLE REMOVED	2014-10-07	E.T.

PLEASE USE THE 3D PART SUBMITTED WITH THIS DRAWING TO PRODUCE: SLIDING DOOR HARDWARE (SDH)-R01 - 72

MATERIAL/TREATMENT: [SEE PART LIST]

FINISHING: [SEE PART LIST]

AS PER PROCESS, IF NOT SPECIFIED: DRAFT ANGLE: --- ROUGHNESS AVERAGE: 125µm [3.2µm] BREAK SHARP CORNERS / DEBURRS

ESTIMATE NET WEIGHT: 13.65lbs 5.39kg QTY/ASSEMBLY: --- BUNDLE ASSEMBLY

TOLERANCES (NON-CUMULATIVE): NOMINAL: ±1/64" [0.40mm] X: ±0.01" [0.25mm] XX: ±0.007" [0.18mm] XXX: ±0.003" [0.08mm] ANGLES: ±5°

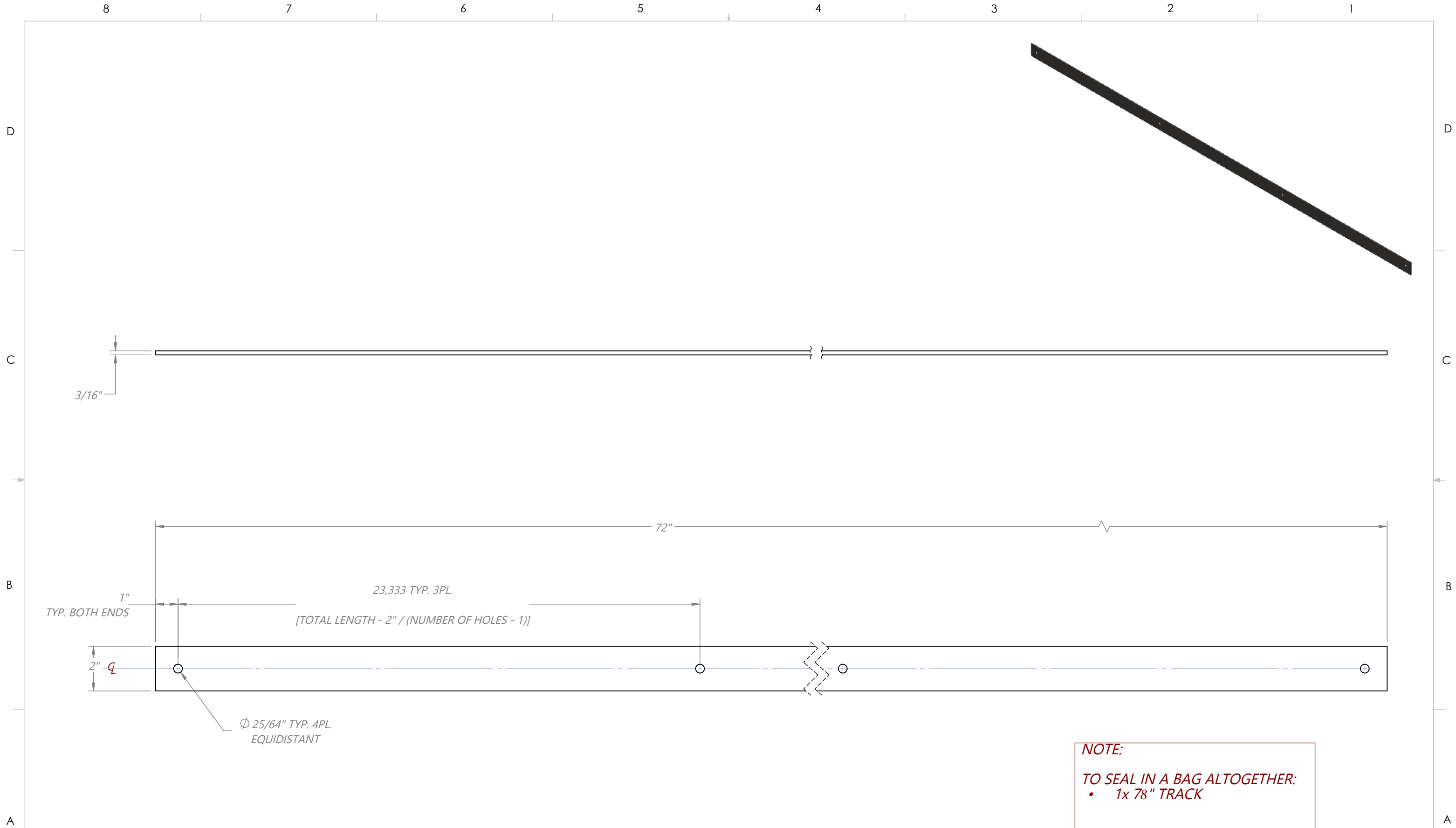


NOTICES: THIS DRAWING IS AN EXCLUSIVE PROPERTY OF MÉTALLIFER (2009) LTEE AND IT CAN'T BE DIRECTLY OR INDIRECTLY USED BY OTHER MANUFACTURERS AND OTHER INSTITUTIONS WITHOUT A WRITTEN CONSENT OF MÉTALLIFER (2009) LTEE.


2190, 3e RUE, SAINT-ROMULAUD (QUÉBEC) CANADA G9W 0V1
 TOLL FREE: 1-800-463-7230
 PHONE: 418-334-6664
 FAX: 418-334-6665
 EMAIL: INFO@METALLIFER.COM
 WEB: WWW.METALLIFER.COM

DRAWN BY: EMMANUEL TREMBLAY
 VERIFIED BY: FRANÇOIS DUSSAULT

PROJECT: SLIDING DOOR HARDWARE - 78 - STD - TB
 (YEAR-MONTH-DAY) 2014-06-02
 DRAWING NUMBER: 1445PSDH72STB-00,R01
 STANDARD: B
 PERMITS: 1:12
 SHEETS: 1/10

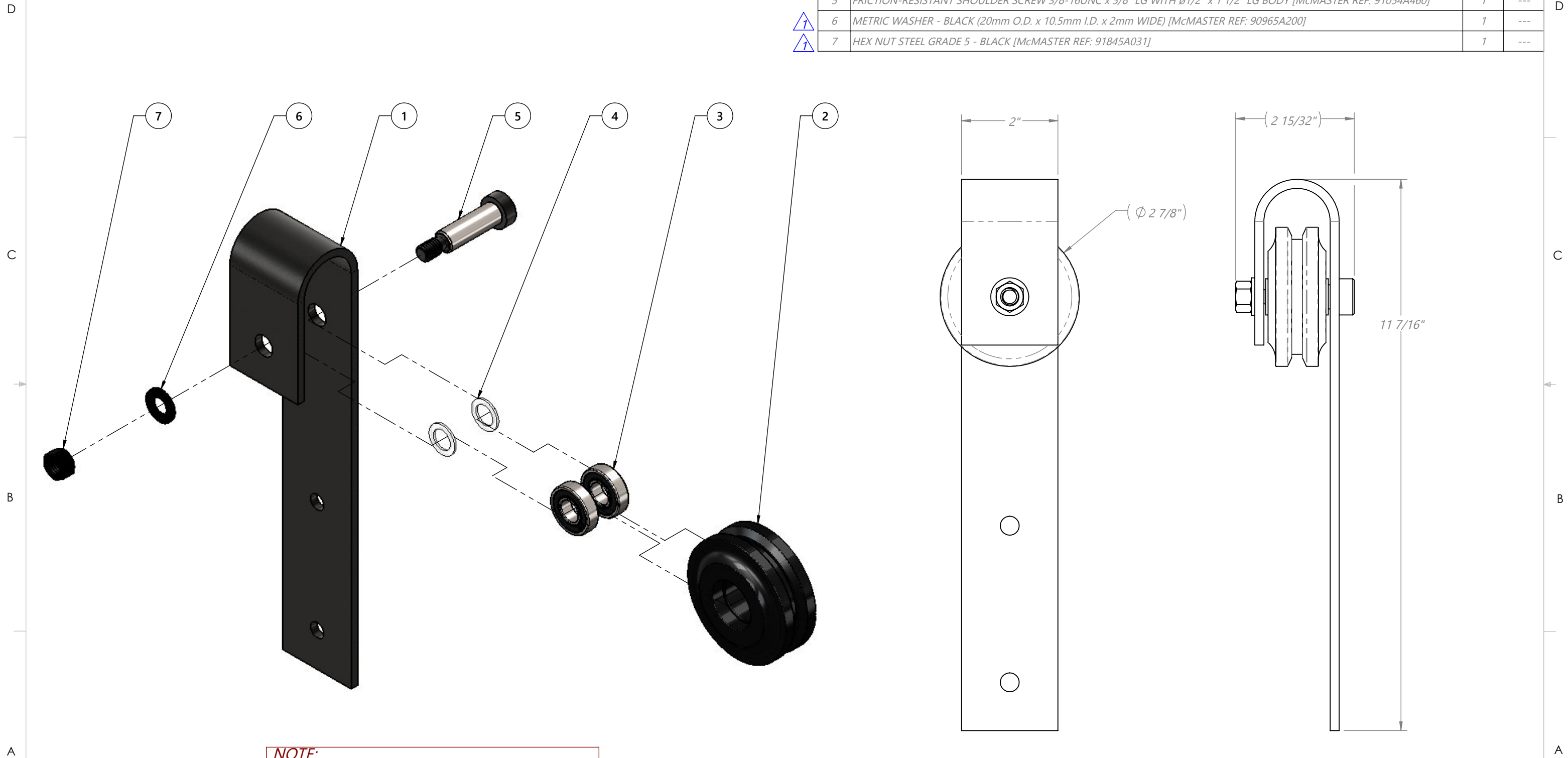


PLEASE USE THE 3D PART SUBMITTED WITH THIS DRAWING TO PRODUCE TRACK (SDH)-72 (TROUS EQUIDISTANT)

MATERIAL/TREATMENT: 3/16" MILD STEEL PLATE, 2"x72"		TOLERANCES (NON-CUMULATIVES) NON-MACHINED DIMENSIONS:		 2190, 3e RUE SAINT-ROMUALD QUÉBEC CANADA G9W 6Y1 PHONE: 418-334-6661 TOLL FREE: 1-800-463-7230 FAX: 418-334-6664 EMAIL: INFO@METALLIFER.COM WEB: WWW.METALLIFER.COM		NOTICES THIS DRAWING IS AN EXCLUSIVE PROPERTY OF METALLIFER (2009) LTEE AND IT CAN'T BE DIRECTLY OR INDIRECTLY USED BY OTHER MANUFACTURERS AND OTHER INSTITUTIONS WITHOUT A WRITTEN CONSENT OF METALLIFER (2009) LTEE	
FINISHING: TEXTURED BLACK COATING		MACHINED DIMENSIONS: NOMINAL: ±1/64" [0.40mm] XX: ±.010" [0.25mm] .XX: ±.007" [0.18mm] XXX: ±.003" [0.08mm]		DRAWN BY:		PROJECT: TRACK (SDH) - 78 - TB	
AS PER PROCESS, IF NOT SPECIFIED: RADI: DRAFT ANGLE: ROUGHNESS AVERAGE: 500µin [12.5µ] BREAK SHARP CORNERS / DEBURRS		ESTIMATED NET WEIGHT: 7.6lbs 3.45kg		QTY/ASSEMBLY: 1		DATE: (YEAR-MONTH-DAY) 2014-06-02	
DRAWING FILE:		IMPERIAL		DRAWING NUMBER: 1445PSDH72STB-00,R01		FORMAT: B	
				SCALE: 1:4		PAGE: 2/10	

REVISIONS			
REV.	DESCRIPTION	DATE	INIT.
1	ITEMS ZINC PLATED IN HANGER (ITEM 2) ARE NOW BLACK / HANDLE REMOVED	2014-10-07	E.T.

ITEM	DESCRIPTION	QTY.	PAGE
1	HANGER - FRAME (SDH) - T - TB	1	4
2	HANGER - ROLLER (SDH)	1	5
3	RADIAL BALL BEARING R8-2RS (1 1/8"O.D. x 1/2" I.D. x 5/16" WIDE)	2	---
4	WASHER OFF-WHITE NYLON 6/6 (0.75"O.D. x 0.5" I.D. x 0.06" WIDE) [McMASTER REF: 90295A187]	2	---
5	FRICTION-RESISTANT SHOULDER SCREW 3/8-16UNC x 5/8" LG WITH $\phi 1/2"$ x 1 1/2" LG BODY [McMASTER REF: 91054A460]	1	---
6	METRIC WASHER - BLACK (20mm O.D. x 10.5mm I.D. x 2mm WIDE) [McMASTER REF: 90965A200]	1	---
7	HEX NUT STEEL GRADE 5 - BLACK [McMASTER REF: 91845A031]	1	---



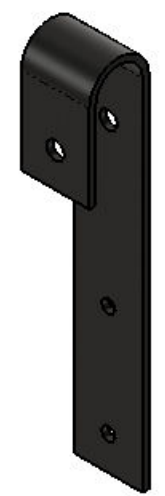
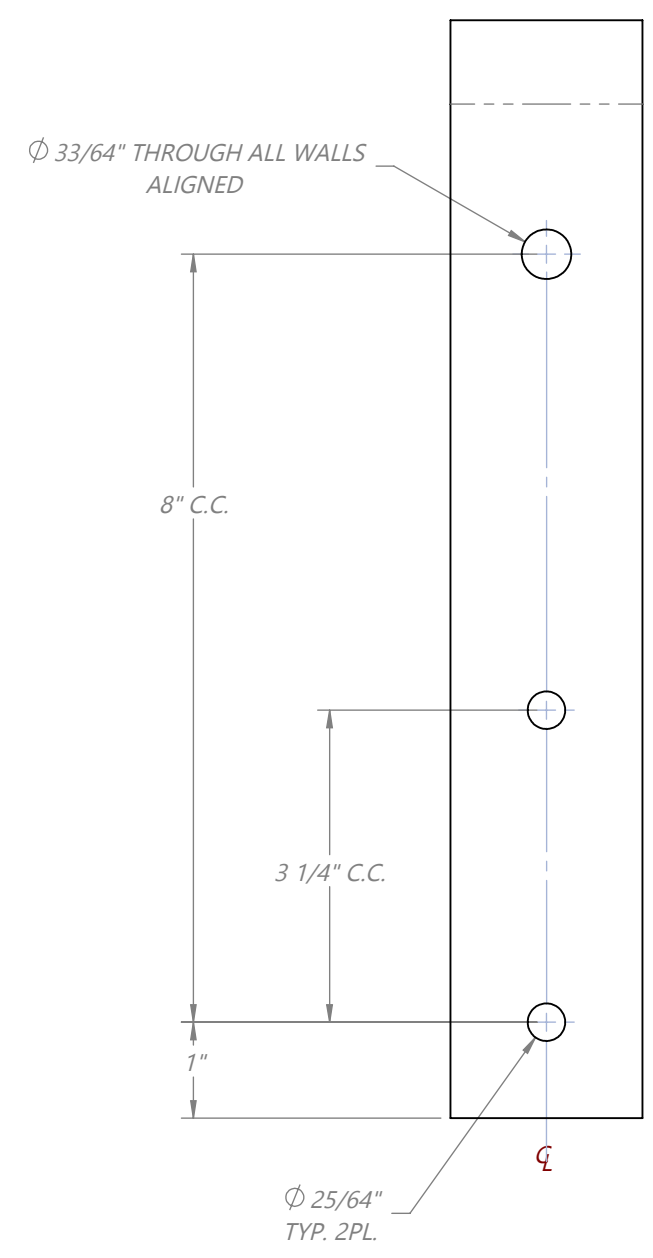
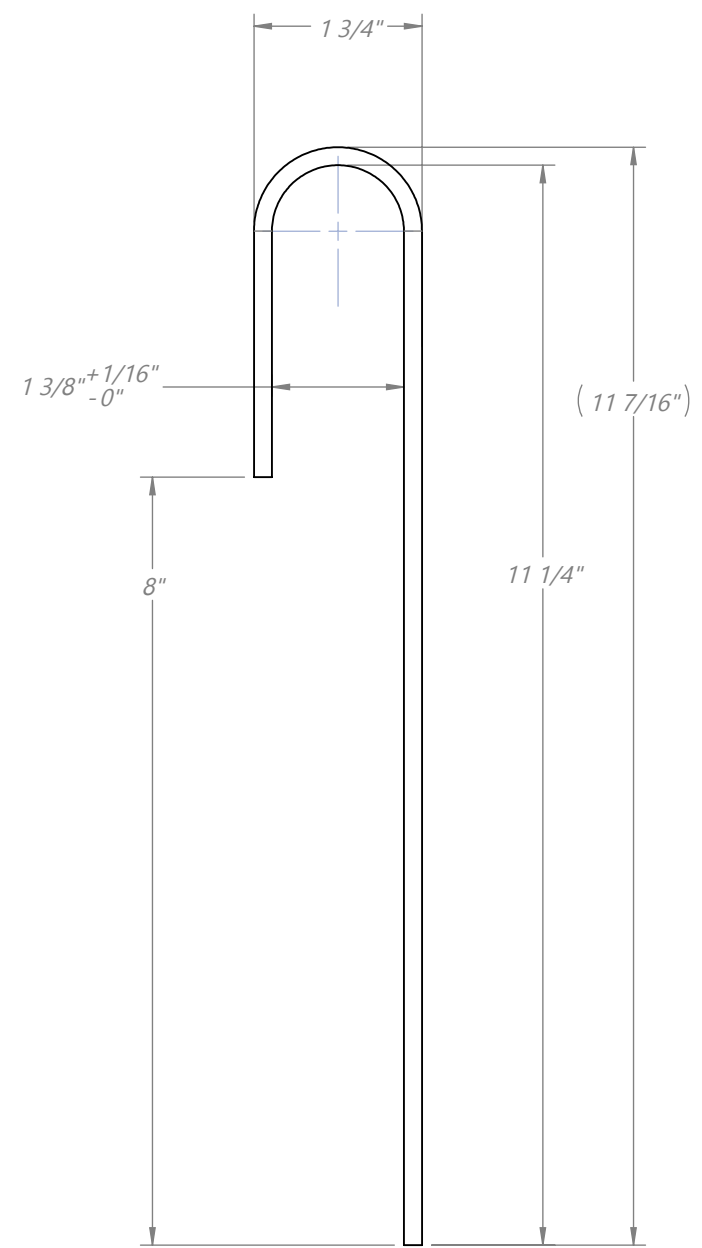
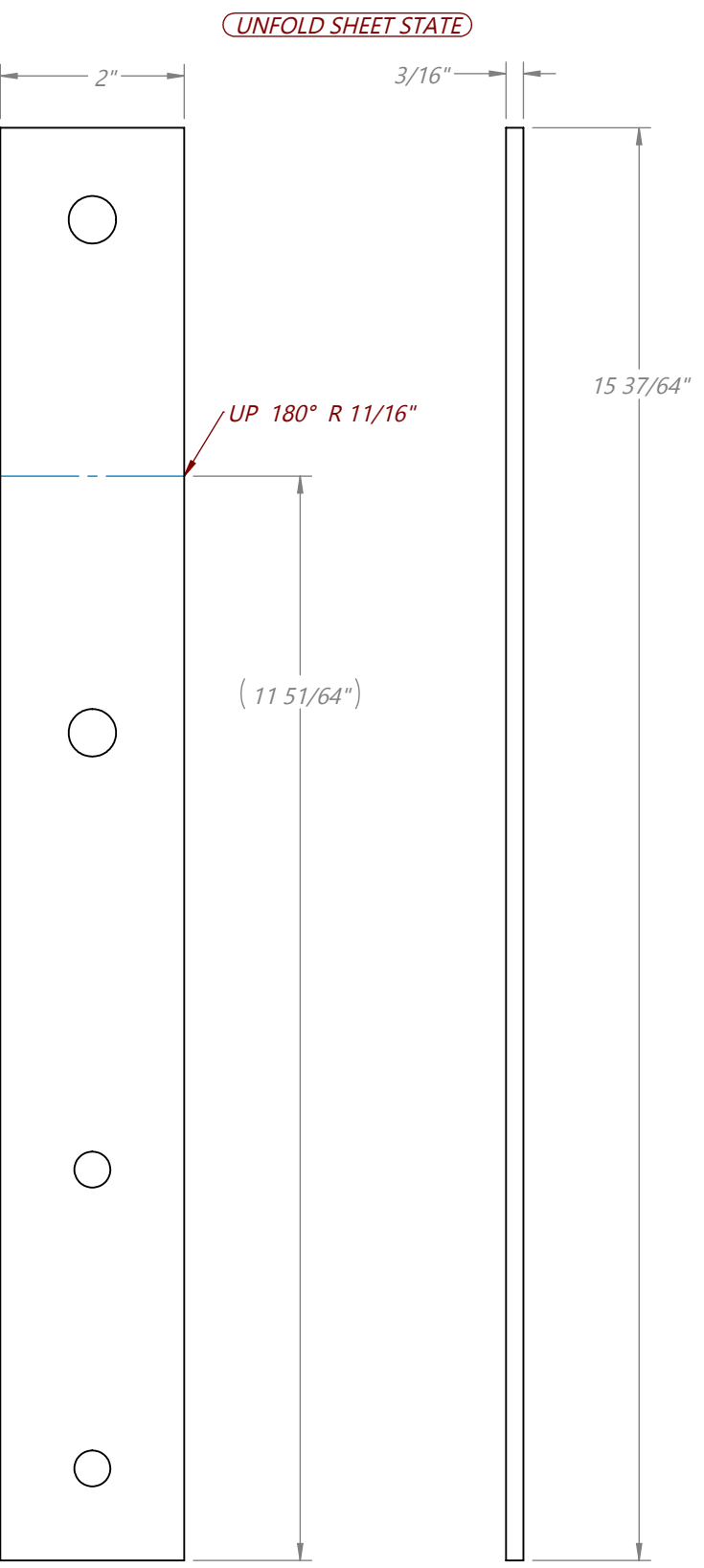
NOTE:
TO SEAL IN A BAG ALTOGETHER:
 • 1x FULLY ASSEMBLED HANGER
TWO ARE REQUIRED FOR THE MASTER KIT

PLEASE USE THE 3D PART SUBMITTED WITH THIS DRAWING TO PRODUCE: HANGER (SDH)-R00-STD

MATERIAL/TREATMENT: [SEE PART LIST]		FINISHING: [SEE PART LIST]		TOLERANCES (NON-CUMULATIVE): NON-MACHINED DIMENSIONS:				NOTICES THIS DRAWING IS AN EXCLUSIVE PROPERTY OF METALLIFER (2009) LTEE AND IT CAN'T BE DIRECTLY OR INDIRECTLY USED BY OTHER MANUFACTURERS AND OTHER INSTITUTIONS WITHOUT A WRITTEN CONSENT OF METALLIFER (2009) LTEE.	
AS PER PROCESS, IF NOT SPECIFIED... RADI: [SEE PART LIST]		DRAFT ANGLE: [SEE PART LIST]		ROUGHNESS AVERAGE: 125µm [3.2µm]		MACHINED DIMENSIONS: NOMINAL: ±1/64" [0.40mm] X: ±.010" [0.25mm] XX: ±.007" [0.18mm] XXX: ±.003" [0.08mm]		PROJECT: HANGER (SDH) - STD - TB	
ESTIMATED NET WEIGHT: 2.1lbs 0.54kg		QTY/ASSEMBLY: 2		DRAWING TYPE: [SEE PART LIST]		VERIFIED BY: [SEE PART LIST]		DATE: 2014-06-02	
								PART NUMBER AND REVISION STATUS: 1445PSDH72STB-00,R01	
								FORMAT: B	
								SCALE: 1:2	
								PAGE: 3/10	

8 7 6 5 4 3 2 1

D
C
B
A



D
C
B
A

FOLDING DATA ARE GUIDELINES ONLY.
OTHER VIEWS MUST BE PRIORITIZED.

PLEASE USE THE 3D PART SUBMITTED WITH THIS DRAWING TO PRODUCE: HANGER-FRAME (SDH)-R00

MATERIAL/TREATMENT: 3/16" MILD STEEL PLATE		FINISHING: TEXTURED BLACK COATING	
AS PER PROCESS, IF NOT SPECIFIED	DRAFT ANGLE: ---	ROUGHNESS AVERAGE: 125µm [3.2µm]	BREAK SHARP CORNERS / DEBURRS
RADI: ---	QTY/ASSEMBLY: 2	FABRICATION	
ESTIMATED NET WEIGHT: 1.6lbs	0.73kg		

TOLERANCES (NON-CUMULATIVES) NON-MACHINED DIMENSIONS:			
MACHINED DIMENSIONS:	NOMINAL: ±1/64" [0.40mm]	XX: ±.010" [0.25mm]	XXX: ±.003" [0.08mm]
ANGLES: ±5°			

Métallifer

2190, 3e RUE, SAINT-ROMUALD (QUÉBEC) CANADA G9W 6Y1
 TEL: 438-334-6661
 FAX: 438-334-6665
 EMAIL: INFO@METALLIFER.COM
 WEB: WWW.METALLIFER.COM

PROJECT: **HANGER-FRAME (SDH) - STD - TB**

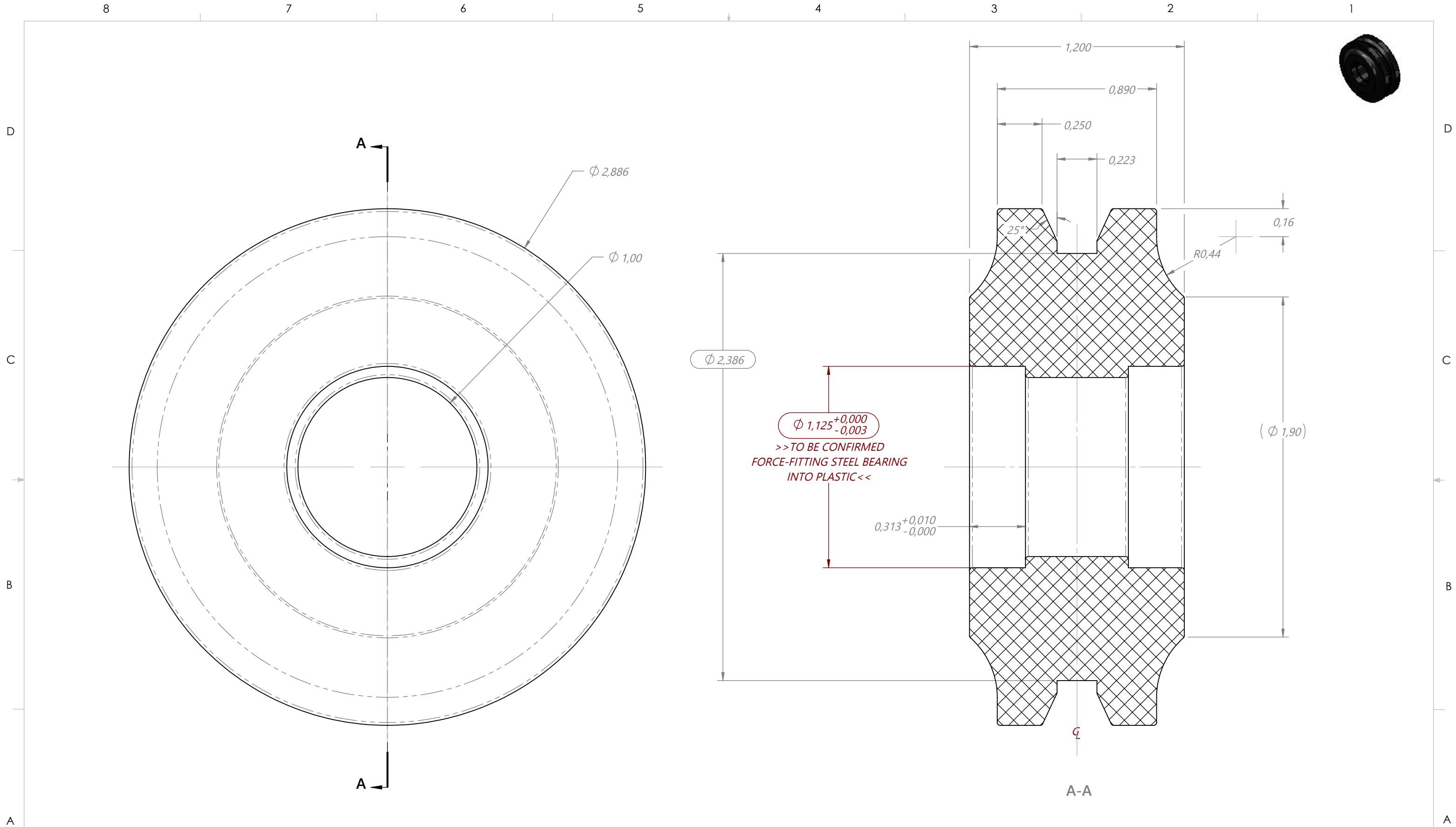
DATE: 2014-06-02

DRAWN BY: **EMMANUEL TREMBLAY**

VERIFIED BY: **FRANÇOIS DUSSAULT**

NOTICES			
THIS DRAWING IS AN EXCLUSIVE PROPERTY OF METALLIFER (2009) LTEE AND IT CAN'T BE DIRECTLY OR INDIRECTLY USED BY OTHER MANUFACTURERS AND OTHER INSTITUTIONS WITHOUT A WRITTEN CONSENT OF METALLIFER (2009) LTEE.			
FORMAT: B	SCALE: 1:2	PAGE: 4/10	

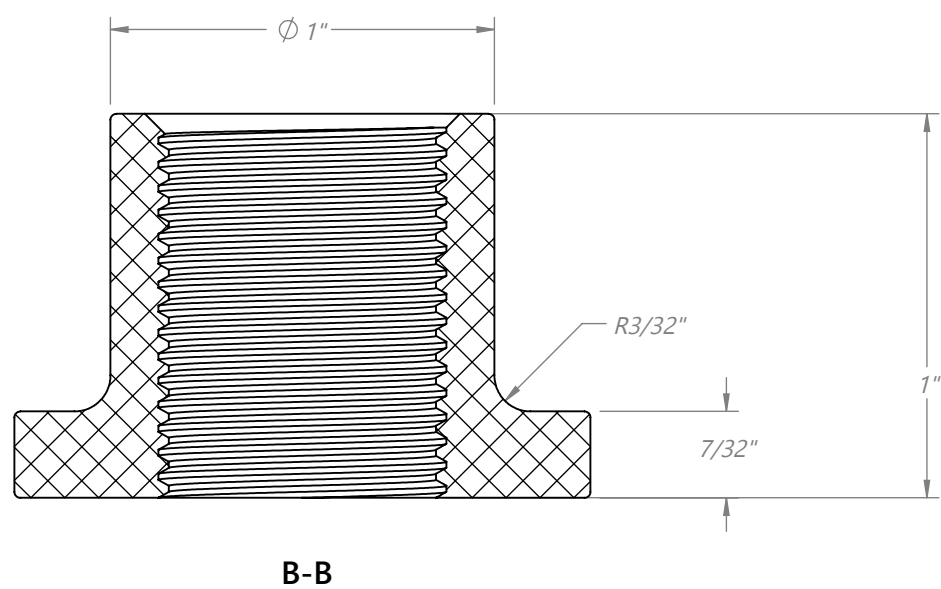
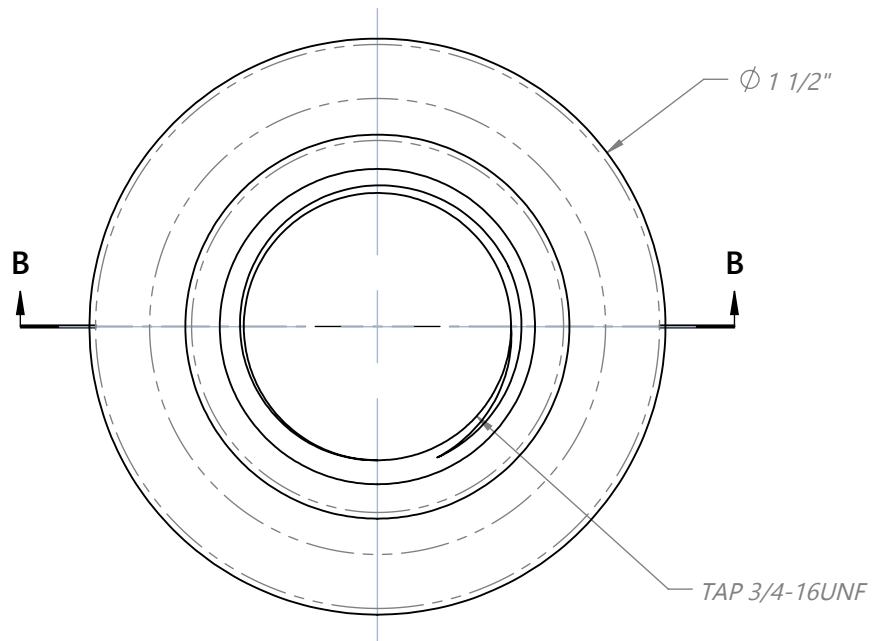
8 7 6 5 4 3 2 1



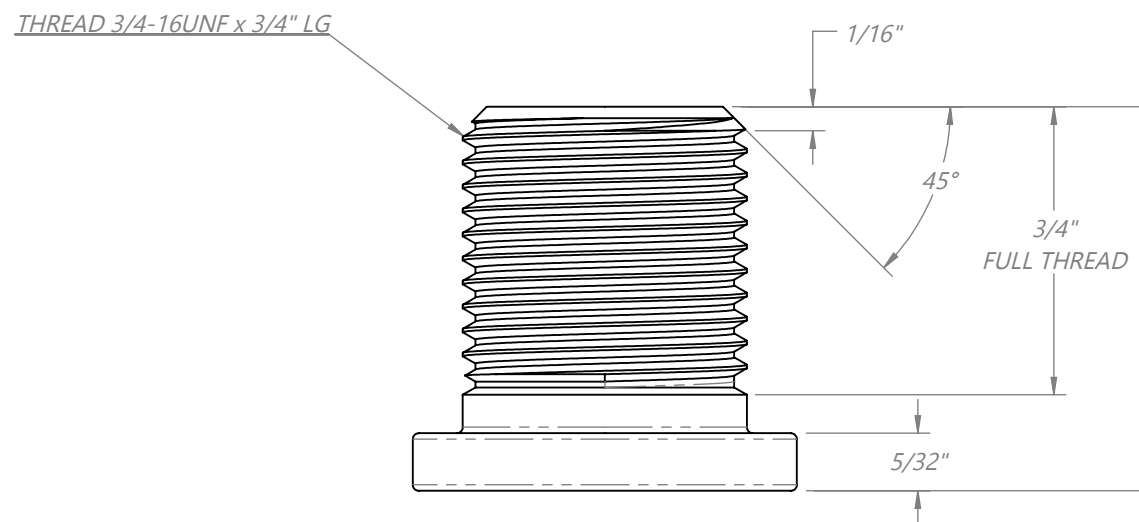
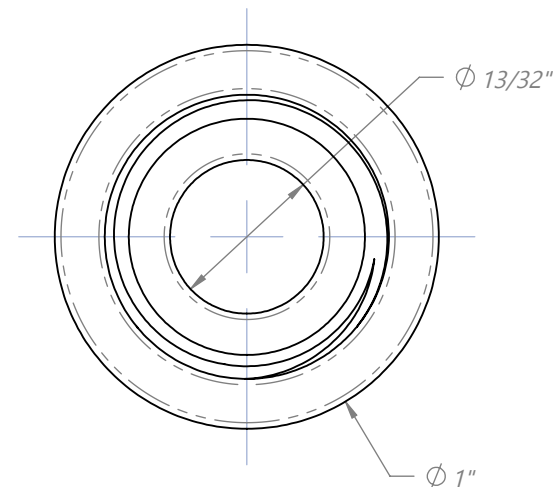
PLEASE USE THE 3D PART SUBMITTED WITH THIS DRAWING TO PRODUCE: HANGER-ROLLER (SDH)-R00

MATERIAL/TREATMENT: BLACK PP (PLASTIC)		TOLERANCES (NON-CUMULATIVES) NON-MACHINED DIMENSIONS:			NOTICES THIS DRAWING IS AN EXCLUSIVE PROPERTY OF METALLIFER (2009) LTEE AND IT CAN'T BE DIRECTLY OR INDIRECTLY USED BY OTHER MANUFACTURERS AND OTHER INSTITUTIONS WITHOUT A WRITTEN CONSENT OF METALLIFER (2009) LTEE.
FINISHING: NONE		MACHINED DIMENSIONS: NOMINAL: ±1/64" [0.40mm] XX: ±0.010" [0.25mm] XXX: ±0.007" [0.18mm] ANGLES: ±5°			
AS PER PROCESS, IF NOT SPECIFIED... RADI: 1/64"		DRAFT ANGLE: --- ROUGHNESS AVERAGE: 125µin [3.2µm] BREAK SHARP CORNERS / DEBURRS		DRAWN BY: EMMANUEL TREMBALY	PROJECT: HANGER-ROLLER (SDH)
ESTIMATED NET WEIGHT: 0.2lb 0.09kg		QTY/ASSEMBLY: 2 FABRICATION		VERIFIED BY: FRANÇOIS DUSSAULT	DATE (YYMMDD): 2014-06-02 DRAWING NUMBER: 1445PSDH72STB-00,R01 FORMAT: B SCALE: 2:1 PAGE: 5/10

ADJUSTABLE SPACER FEMALE



ADJUSTABLE SPACER MALE



NOTE:

- TO SEAL IN A BAG ALTOGETHER:
- 4x ADJUSTABLE SPACER MALE
 - 4x ADJUSTABLE SPACER FEMALE
 - 4x LAG SCREW M8 x 2.8mm x 90mm LG (OR 5/16-9 x 3 1/2"), BLACK (see page 10)
 - 4x WASHER M8, 16mm OD x 8.4mm ID x 1.5mm, BLACK (see page 10)

PLEASE USE THE 3D PART SUBMITTED WITH THIS DRAWING TO PRODUCE: ADJUSTABLE SPACER - FEMALE (SDH)-R00

MATERIAL/TREATMENT: BLACK PP (PLASTIC)	TOLERANCES (NON-CUMULATIVES) NON-MACHINED DIMENSIONS:
FINISHING: NONE	MACHINED DIMENSIONS:
AS PER PROCESS, IF NOT SPECIFIED: DRAFT ANGLE: --- ROUGHERNESS AVERAGE: 125µm [3.2µm] BREAK SHARP CORNERS / DEBURRS	NOMINAL: ±1/64" [0.40mm] XX: ±.010" [0.25mm] XXX: ±.007" [0.18mm]
ESTIMATED NET WEIGHT: 0.0lbs 0kg SEE NOTE FABRICATION	ANGLES: ±5°

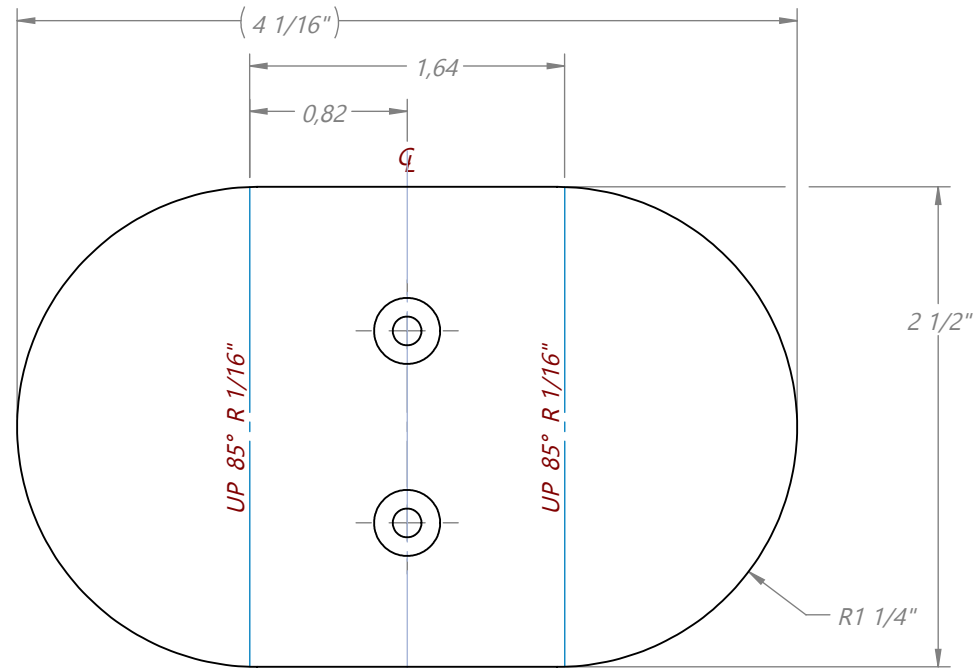


2190, 3e RUE, SAINT-ROMULFO (QUÉBEC) CANADA, G5W 6Y4 TOLL FREE: 1-800-463-7230 PHONE: 418-334-6664 FAX: 418-334-6665 EMAIL: INFO@METALLIFER.COM WEB: WWW.METALLIFER.COM	NOTICES THIS DRAWING IS AN EXCLUSIVE PROPERTY OF METALLIFER (2009) LTEE AND IT CAN'T BE DIRECTLY OR INDIRECTLY USED BY OTHER MANUFACTURERS AND OTHER INSTITUTIONS WITHOUT A WRITTEN CONSENT OF METALLIFER (2009) LTEE.
DRAWN BY: EMMANUEL TREMBALY	PROJECT: ADJUSTABLE SPACER - FEMALE
VERIFIED BY: FRANÇOIS DUSSAULT	DATE (YEAR-MONTH-DAY): 2014-06-02
FORMAT: B	SCALE: 2:1
PAGE: 6/10	NO. OF SHEETS: 1445PSDH72STB-00,R01

8 7 6 5 4 3 2 1

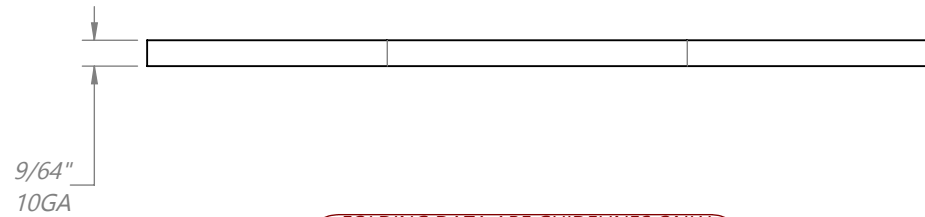
D

UNFOLD SHEET STATE



C

B



FOLDING DATA ARE GUIDELINES ONLY.
OTHER VIEWS MUST BE PRIORITIZED.

NOTE:

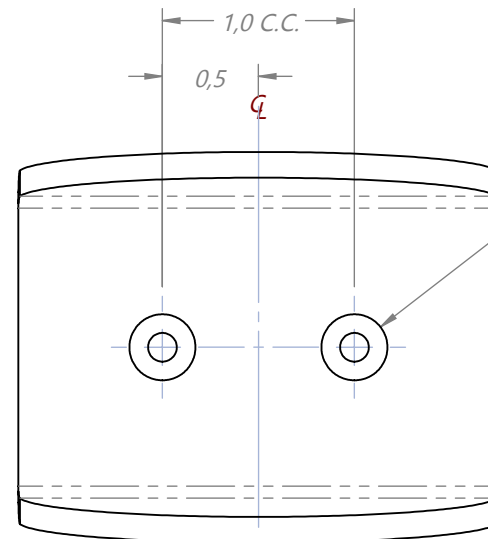
TO SEAL IN A BAG ALTOGETHER:

- 1x DOOR C GUIDE
- 2x FLAT HEAD PHILLIPS SOCKET SCREW, #6-9 x 1 1/4" LG, BLACK OXYDE

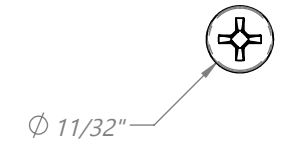
A



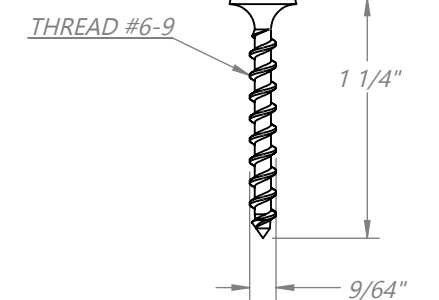
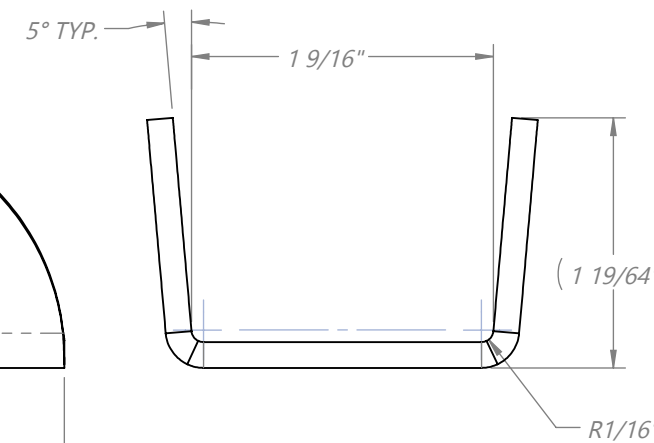
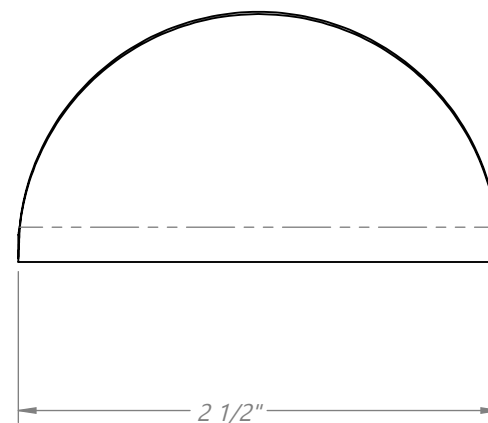
D



$\Phi 11/32'' \checkmark 82^\circ$
DRILL 5/32'' THROUGH ALL
TYP. 2PL.



C



B

A

8 7 6 5 4 3 2 1

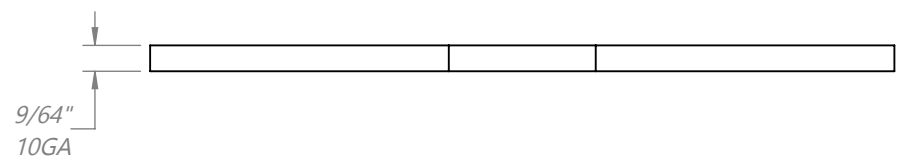
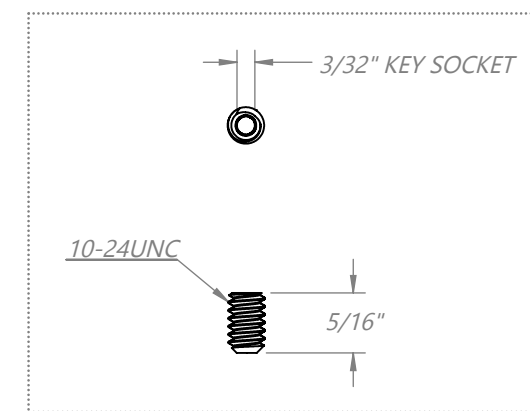
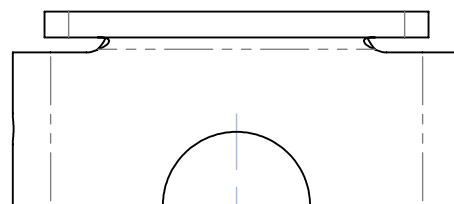
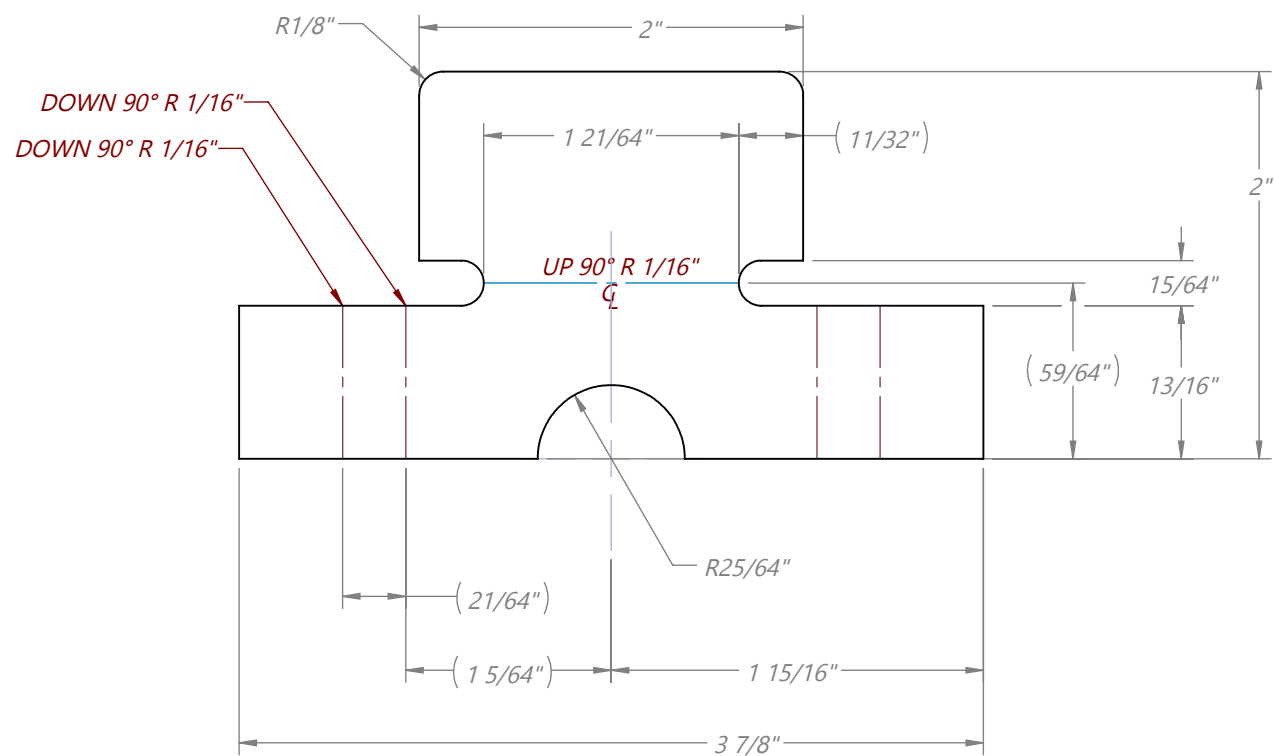
PLEASE USE THE 3D PART SUBMITTED WITH THIS DRAWING TO PRODUCE: DOOR C GUIDE (SDH)-R00

MATERIAL/TREATMENT: GA10 MILD STEEL SHEET		FINISHING: TEXTURED BLACK COATING	
AS PER PROCESS, IF NOT SPECIFIED.		AS PER PROCESS, IF NOT SPECIFIED.	
RADI:	DRAFT ANGLE:	ROUGHNESS AVERAGE:	BREAK SHARP CORNERS / DEBURRS:
		125µm [3.2µm]	
ESTIMATED NET WEIGHT:	QTY/ASSEMBLY:	DRAWING TYPE:	
0.3lbs 0.14kg	1		

TOLERANCES (NON-CUMULATIVES) NON-MACHINED DIMENSIONS:	
MACHINED DIMENSIONS:	
NOMINAL: ±1/64" [0.40mm]	
.X: ±0.01" [0.25mm]	
.XX: ±0.007" [0.18mm]	
.XXX: ±0.003" [0.08mm]	
ANGLES: ±5°	

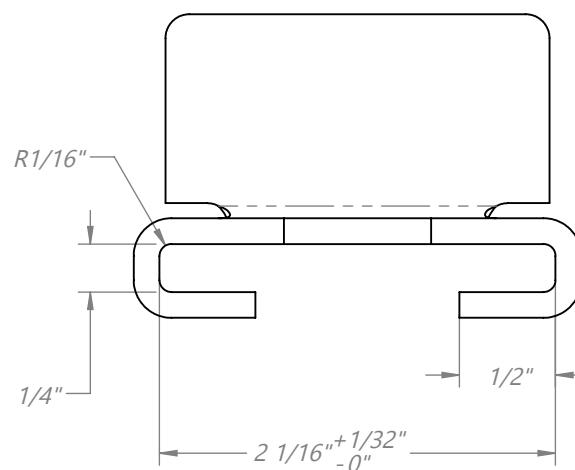
Métallifer		2190, 3e RUE, SAINT-ROMUALD (QUÉBEC) CANADA G9W 6W1 TOLL FREE: 1-800-463-7230 PHONE: 418-334-6661 FAX: 418-334-6662 EMAIL: INFO@METALLIFER.COM WEB: WWW.METALLIFER.COM	
DRAWN BY:	PROJECT:	NOTICES	
VERIFIED BY:	2014-06-02	THIS DRAWING IS AN EXCLUSIVE PROPERTY OF METALLIFER (2009) LTEE AND IT CAN'T BE DIRECTLY OR INDIRECTLY USED BY OTHER MANUFACTURERS AND OTHER INSTITUTIONS WITHOUT A WRITTEN CONSENT OF METALLIFER (2009) LTEE.	
	1445PSDH72STB-00,R01	FORMAT:	SCALE:
		B	1:1
		PAGE:	7/10

UNFOLD SHEET STATE

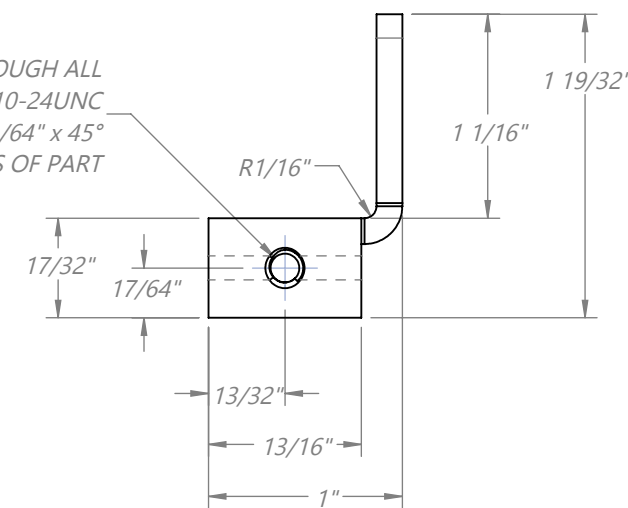


FOLDING DATA ARE GUIDELINES ONLY.
 OTHER VIEWS MUST BE PRIORITIZED.

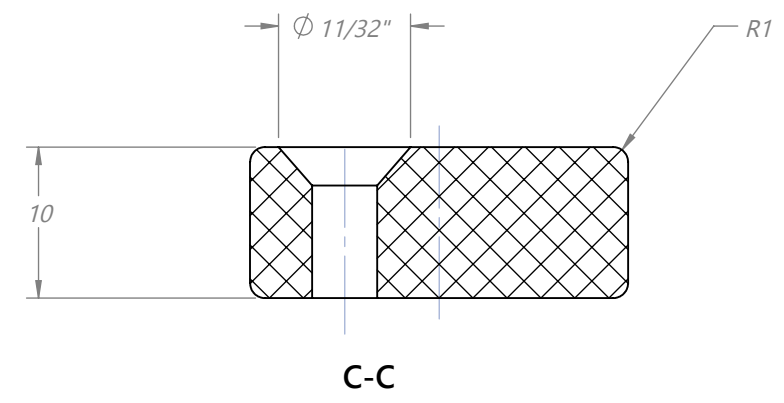
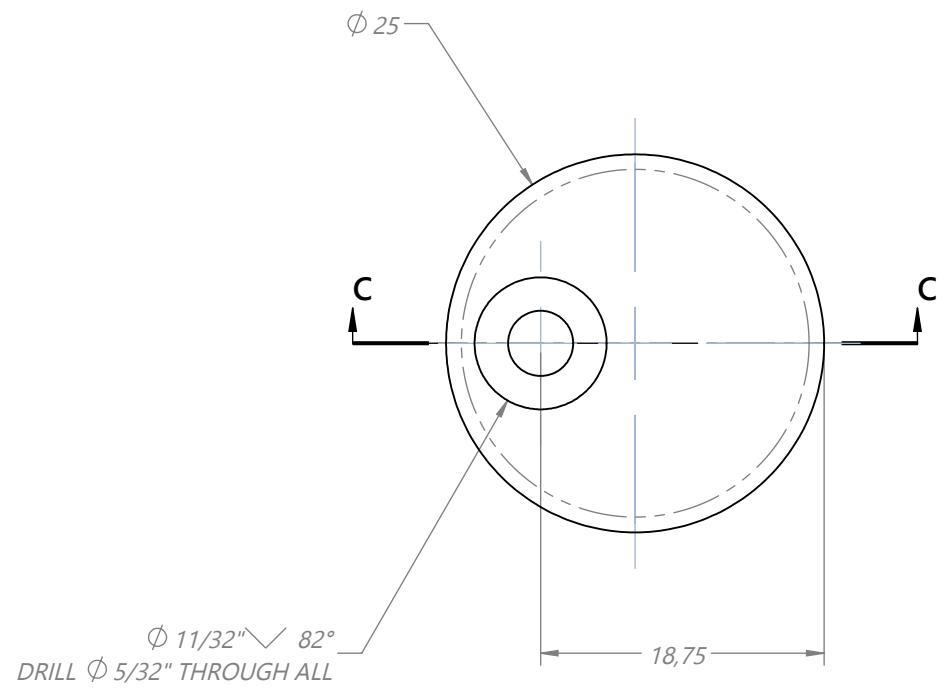
NOTE:
 TO SEAL IN A BAG ALTOGETHER:
 • 2x DOOR STOP-SHORT SLEAVE
 • 4X SETSCREW 10-24UNC x 5/16" FLAT POINT



DRILL 0.1495 (NO. 25) THROUGH ALL
 TAP 10-24UNC
 CHAMFER 1/64" x 45°
 TYP. BOTH SIDES OF PART



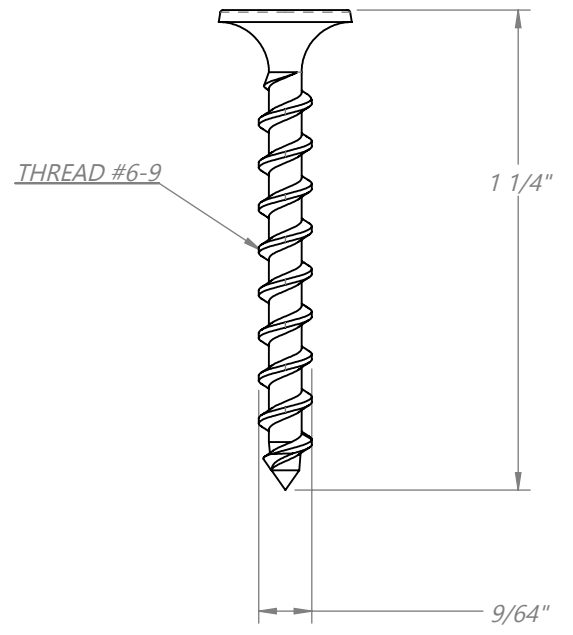
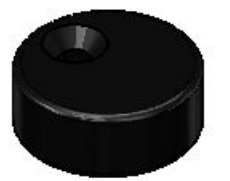
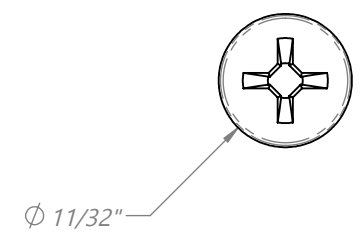
PLEASE USE THE 3D PART SUBMITTED WITH THIS DRAWING TO PRODUCE: DOOR STOP (SDH)-Q2-GLISSIERE (SETSCREW)				TOLERANCES (NON-CUMULATIVES) NON-MACHINED DIMENSIONS:		2190, St. RUE. SAINT-ROMUALD (QUEBEC) CANADA G9W 8V9 TEL: 514-334-6664 FAX: 514-334-6665 EMAIL: INFO@METALLIFER.COM WEB: WWW.METALLIFER.COM		NOTICES THIS DRAWING IS AN EXCLUSIVE PROPERTY OF METALLIFER (2009) LTEE AND IT CAN'T BE DIRECTLY OR INDIRECTLY USED BY OTHER MANUFACTURERS AND OTHER INSTITUTIONS WITHOUT A WRITTEN CONSENT OF METALLIFER (2009) LTEE.	
MATERIAL/TREATMENT: 10GA MILD STEEL SHEET FINISHING: TEXTURED BLACK COATING		AS PER PROCESS, IF NOT SPECIFIED: DRAFT ANGLE: 125µm ROUGHNESS AVERAGE: [3.2µm]		BREAK SHARP CORNERS / DEBURRS		MACHINED DIMENSIONS: NOMINAL: ±1/64" [0.40mm] .X: ±0.010" [0.25mm] .XX: ±0.007" [0.18mm] .XXX: ±0.003" [0.08mm]		PROJECT: DOOR STOP (SDH) - TB	
ESTIMATED NET WEIGHT: 0.2lbs 0.09kg		QTY/ASSEMBLY: 2		DRAWING TYPE: IMPERIAL		DATE: (YEAR-MONTH-DAY) 2014-06-02		REVISION STATUS: 1445PSDH72STB-00,R01	
						DRAWN BY:		VERIFIED BY:	
						FORMAT: B		SCALE: 1:1	
						PAGE: 8/10			



NOTE:

TO SEAL IN A BAG ALTOGETHER:

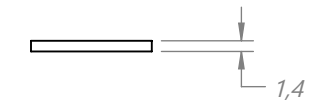
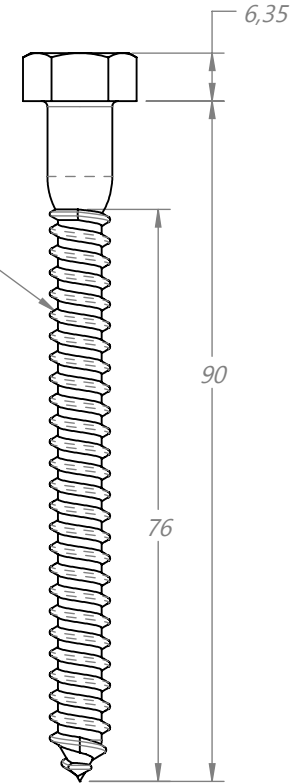
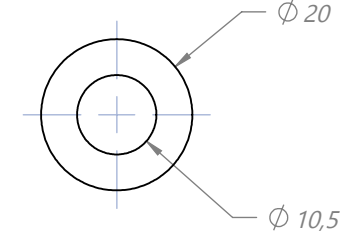
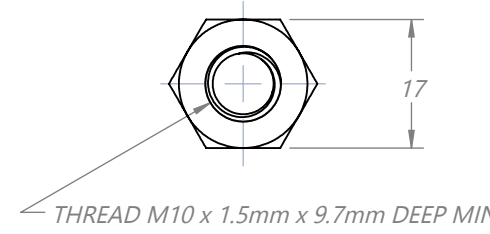
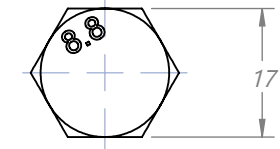
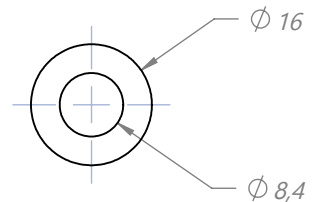
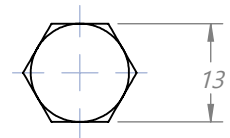
- 2x ANTI-JUMP DEVICE
- 2x FLAT HEAD PHILLIPS SOCKET SCREW, #6-9 x 1 1/4" LG, BLACK OXYDE



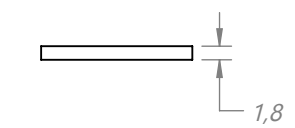
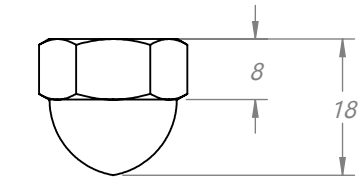
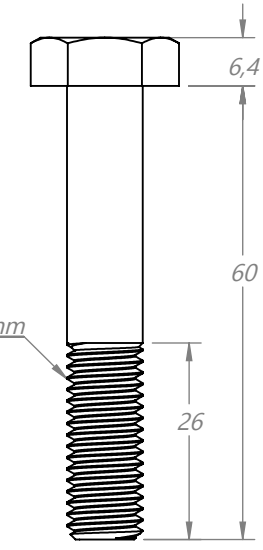
PLEASE USE THE 3D PART SUBMITTED WITH THIS DRAWING TO PRODUCE ANTI-JUMP DEVICE (SDH)-OFFCENTERED

MATERIAL/TREATMENT: BLACK PP (PLASTIC)		TOLERANCES (NON-CUMULATIVES) NON-MACHINED DIMENSIONS:		NOTICES THIS DRAWING IS AN EXCLUSIVE PROPERTY OF METALLIFER (2009) LTEE AND IT CAN'T BE DIRECTLY OR INDIRECTLY USED BY OTHER MANUFACTURERS AND OTHER INSTITUTIONS WITHOUT A WRITTEN CONSENT OF METALLIFER (2009) LTEE.	
FINISHING: NONE		AS PER PROCESS, IF NOT SPECIFIED... DRAFT ANGLE: --- ROUGHNESS AVERAGE: 125µm [3.2µm] BREAK SHARP CORNERS / DEBURRS		MACHINED DIMENSIONS: NOMINAL: ±1/64" [0.40mm] .X: ±0.01" [0.25mm] .XX: ±0.007" [0.18mm] .XXX: ±0.003" [0.08mm] ANGLES: ±5°	
ESTIMATED NET WEIGHT: 0.0bs	0kg	QTY/ASSEMBLY: 2	FABRICATION	DRAWN BY: EMMANUEL TREMBLAY	PROJECT: ANTI-JUMP DEVICE (SDH)
2014-06-02		1445PSDH72STB-00,R01		DATE (YEAR-MONTH-DAY)	STATUS:
2014-06-02		1445PSDH72STB-00,R01		2014-06-02	1445PSDH72STB-00,R01
2014-06-02		1445PSDH72STB-00,R01		2014-06-02	1445PSDH72STB-00,R01
2014-06-02		1445PSDH72STB-00,R01		2014-06-02	1445PSDH72STB-00,R01
2014-06-02		1445PSDH72STB-00,R01		2014-06-02	1445PSDH72STB-00,R01
2014-06-02		1445PSDH72STB-00,R01		2014-06-02	1445PSDH72STB-00,R01
2014-06-02		1445PSDH72STB-00,R01		2014-06-02	1445PSDH72STB-00,R01
2014-06-02		1445PSDH72STB-00,R01		2014-06-02	1445PSDH72STB-00,R01
2014-06-02		1445PSDH72STB-00,R01		2014-06-02	1445PSDH72STB-00,R01
2014-06-02		1445PSDH72STB-00,R01		2014-06-02	1445PSDH72STB-00,R01
2014-06-02		1445PSDH72STB-00,R01		2014-06-02	1445PSDH72STB-00,R01
2014-06-02		1445PSDH72STB-00,R01		2014-06-02	1445PSDH72STB-00,R01
2014-06-02		1445PSDH72STB-00,R01		2014-06-02	1445PSDH72STB-00,R01
2014-06-02		1445PSDH72STB-00,R01		2014-06-02	1445PSDH72STB-00,R01
2014-06-02		1445PSDH72STB-00,R01		2014-06-02	1445PSDH72STB-00,R01
2014-06-02		1445PSDH72STB-00,R01		2014-06-02	1445PSDH72STB-00,R01
2014-06-02		1445PSDH72STB-00,R01		2014-06-02	1445PSDH72STB-00,R01
2014-06-02		1445PSDH72STB-00,R01		2014-06-02	1445PSDH72STB-00,R01
2014-06-02		1445PSDH72STB-00,R01		2014-06-02	1445PSDH72STB-00,R01
2014-06-02		1445PSDH72STB-00,R01		2014-06-02	1445PSDH72STB-00,R01
2014-06-02		1445PSDH72STB-00,R01		2014-06-02	1445PSDH72STB-00,R01
2014-06-02		1445PSDH72STB-00,R01		2014-06-02	1445PSDH72STB-00,R01
2014-06-02		1445PSDH72STB-00,R01		2014-06-02	1445PSDH72STB-00,R01
2014-06-02		1445PSDH72STB-00,R01		2014-06-02	1445PSDH72STB-00,R01
2014-06-02		1445PSDH72STB-00,R01		2014-06-02	1445PSDH72STB-00,R01
2014-06-02		1445PSDH72STB-00,R01		2014-06-02	1445PSDH72STB-00,R01
2014-06-02		1445PSDH72STB-00,R01		2014-06-02	1445PSDH72STB-00,R01
2014-06-02		1445PSDH72STB-00,R01		2014-06-02	1445PSDH72STB-00,R01
2014-06-02		1445PSDH72STB-00,R01		2014-06-02	1445PSDH72STB-00,R01
2014-06-02		1445PSDH72STB-00,R01		2014-06-02	1445PSDH72STB-00,R01
2014-06-02		1445PSDH72STB-00,R01		2014-06-02	1445PSDH72STB-00,R01
2014-06-02		1445PSDH72STB-00,R01		2014-06-02	1445PSDH72STB-00,R01
2014-06-02		1445PSDH72STB-00,R01		2014-06-02	1445PSDH72STB-00,R01
2014-06-02		1445PSDH72STB-00,R01		2014-06-02	1445PSDH72STB-00,R01
2014-06-02		1445PSDH72STB-00,R01		2014-06-02	1445PSDH72STB-00,R01
2014-06-02		1445PSDH72STB-00,R01		2014-06-02	1445PSDH72STB-00,R01
2014-06-02		1445PSDH72STB-00,R01		2014-06-02	1445PSDH72STB-00,R01
2014-06-02		1445PSDH72STB-00,R01		2014-06-02	1445PSDH72STB-00,R01
2014-06-02		1445PSDH72STB-00,R01		2014-06-02	1445PSDH72STB-00,R01
2014-06-02		1445PSDH72STB-00,R01		2014-06-02	1445PSDH72STB-00,R01
2014-06-02		1445PSDH72STB-00,R01		2014-06-02	1445PSDH72STB-00,R01
2014-06-02		1445PSDH72STB-00,R01		2014-06-02	1445PSDH72STB-00,R01
2014-06-02		1445PSDH72STB-00,R01		2014-06-02	1445PSDH72STB-00,R01
2014-06-02		1445PSDH72STB-00,R01		2014-06-02	1445PSDH72STB-00,R01
2014-06-02		1445PSDH72STB-00,R01		2014-06-02	1445PSDH72STB-00,R01
2014-06-02		1445PSDH72STB-00,R01		2014-06-02	1445PSDH72STB-00,R01
2014-06-02		1445PSDH72STB-00,R01		2014-06-02	1445PSDH72STB-00,R01
2014-06-02		1445PSDH72STB-00,R01		2014-06-02	1445PSDH72STB-00,R01
2014-06-02		1445PSDH72STB-00,R01		2014-06-02	1445PSDH72STB-00,R01
2014-06-02		1445PSDH72STB-00,R01		2014-06-02	1445PSDH72STB-00,R01
2014-06-02		1445PSDH72STB-00,R01		2014-06-02	1445PSDH72STB-00,R01
2014-06-02		1445PSDH72STB-00,R01		2014-06-02	1445PSDH72STB-00,R01
2014-06-02		1445PSDH72STB-00,R01		2014-06-02	1445PSDH72STB-00,R01
2014-06-02		1445PSDH72STB-00,R01		2014-06-02	1445PSDH72STB-00,R01
2014-06-02		1445PSDH72STB-00,R01		2014-06-02	1445PSDH72STB-00,R01
2014-06-02		1445PSDH72STB-00,R01		2014-06-02	1445PSDH72STB-00,R01
2014-06-02		1445PSDH72STB-00,R01		2014-06-02	1445PSDH72STB-00,R01
2014-06-02		1445PSDH72STB-00,R01		2014-06-02	1445PSDH72STB-00,R01
2014-06-02		1445PSDH72STB-00,R01		2014-06-02	1445PSDH72STB-00,R01
2014-06-02		1445PSDH72STB-00,R01		2014-06-02	1445PSDH72STB-00,R01
2014-06-02		1445PSDH72STB-00,R01		2014-06-02	1445PSDH72STB-00,R01
2014-06-02		1445PSDH72STB-00,R01		2014-06-02	1445PSDH72STB-00,R01
2014-06-02		1445PSDH72STB-00,R01		2014-06-02	1445PSDH72STB-00,R01
2014-06-02		1445PSDH72STB-00,R01		2014-06-02	1445PSDH72STB-00,R01
2014-06-02		1445PSDH72STB-00,R01		2014-06-02	1445PSDH72STB-00,R01
2014-06-02		1445PSDH72STB-00,R01		2014-06-02	1445PSDH72STB-00,R01
2014-06-02		1445PSDH72STB-00,R01		2014-06-02	1445PSDH72STB-00,R01
2014-06-02		1445PSDH72STB-00,R01		2014-06-02	1445PSDH72STB-00,R01
2014-06-02		1445PSDH72STB-00,R01		2014-06-02	1445PSDH72STB-00,R01
2014-06-02		1445PSDH72STB-00,R01		2014-06-02	1445PSDH72STB-00,R01
2014-06-02		1445PSDH72STB-00,R01		2014-06-02	1445PSDH72STB-00,R01
2014-06-02		1445PSDH72STB-00,R01		2014-06-02	1445PSDH72STB-00,R01
2014-06-02		1445PSDH72STB-00,R01		2014-06-02	1445PSDH72STB-00,R01
2014-06-02		1445PSDH72STB-00,R01		2014-06-02	1445PSDH72STB-00,R01
2014-06-02		1445PSDH72STB-00,R01		2014-06-02	1445PSDH72STB-00,R01
2014-06-02		1445PSDH72STB-00,R01		2014-06-02	1445PSDH72STB-00,R01
2014-06-02		1445PSDH72STB-00,R01		2014-06-02	1445PSDH72STB-00,R01
2014-06-02		1445PSDH72STB-00,R01		2014-06-02	1445PSDH72STB-00,R01
2014-06-02		1445PSDH72STB-00,R01		2014-06-02	1445PSDH72STB-00,R01
2014-06-02		1445PSDH72STB-00,R01		2014-06-02	1445PSDH72STB-00,R01
2014-06-02		1445PSDH72STB-00,R01		2014-06-02	1445PSDH72STB-00,R01
2014-06-02		1445PSDH72STB-00,R01		2014-06-02	1445PSDH72STB-00,R01
2014-06-02		1445PSDH72STB-00,R01		2014-06-02	1445PSDH72STB-00,R01
2014-06-02		1445PSDH72STB-00,R01		2014-06-02	1445PSDH72STB-00,R01
2014-06-02		1445PSDH72STB-00,R01		2014-06-02	1445PSDH72STB-00,R01
2014-06-02		1445PSDH72STB-00,R01		2014-06-02	1445PSDH72STB-00,R01
2014-06-02		1445PSDH72STB-00,R01		2014-06-02	1445PSDH72STB-00,R01
2014-06-02		1445PSDH72STB-00,R01		2014-06-02	1445PSDH72STB-00,R01
2014-06-02		1445PSDH72STB-00,R01		2014-06-02	1445PSDH72STB-00,R01
2014-06-02		1445PSDH72STB-00,R01		2014-06-02	1445PSDH72STB-00,R01
2014-06-02		1445PSDH72STB-00,R01		2014-06-02	1445PSDH72STB-00,R01
2014-06-02		1445PSDH72STB-00,R01		2014-06-02	1445PSDH72STB-00,R01
2014-06-02		1445PSDH72STB-00,R01		2014-06-02	1445PSDH72STB-00,R01
2014-06-02		1445PSDH72STB-00,R01		2014-06-02	1445PSDH72STB-00,R01
2014-06-02		1445PSDH72STB-00,R01		2014-06-02	1445PSDH72STB-00,R01
2014-06-02		1445PSDH72STB-00,R01		2014-06-02	1445PSDH72STB-00,R01
2014-06-02		1445PSDH72STB-00,R01		2014-06-02	1445PSDH72STB-00,R01
2014-06-02		1445PSDH72STB-00,R01		2014-06-02	1445PSDH72STB-00,R01
2014-06-02		1445PSDH72STB-00,R01		2014-06-02	1445PSDH72STB-00,R01
2014-06-02		1445PSDH72STB-00,R01		2014-06-02	1445PSDH72STB-00,R01
2014-06-02		1445PSDH72STB-00,R01		2014-06-02	1445PSDH72ST

TO BE PROVIDED IN THE SAME BAG OF ADJUSTABLE SPACERS (see page 6)



THREAD M10 x 1.5mm x 60mm



NOTE:
TO SEAL IN A BAG ALTOGETHER:

- 4x HEX CAP SCREW M10 x 1.5mm x 60mm LG GR.8.8, BLACK
- 4x ACORN NUT M10 x 1.5mm x 9.7mm MIN. THREADING, BLACK
- 8x WASHER M10, 20mm OD x 10.5mm ID x 2mm, BLACK

MATERIAL/TREATMENT: ASSORTED STEEL FASTENERS		TOLERANCES (NON-CUMULATIVES) NON-MACHINED DIMENSIONS:		2190, 3e RUE, SAINT-ROMULD (QUÉBEC) CANADA G5W 6Y1 TEL: 438-334-6664 FAX: 438-334-6665 EMAIL: INFO@METALLIFER.COM WEB: WWW.METALLIFER.COM	NOTICES THIS DRAWING IS AN EXCLUSIVE PROPERTY OF METALLIFER (2009) LTEE AND IT CAN'T BE DIRECTLY OR INDIRECTLY USED BY OTHER MANUFACTURERS AND OTHER INSTITUTIONS WITHOUT A WRITTEN CONSENT OF METALLIFER (2009) LTEE
FINISHING: [SEE NOTE]		MACHINED DIMENSIONS: NOMINAL: ±1/64" [0.40mm] X: ±0.010" [0.25mm] XX: ±0.007" [0.18mm] ANGLES: ±5° XXX: ±0.003" [0.08mm]			
AS PER PROCESS, IF NOT SPECIFIED: DRAFT ANGLE: --- RADI: --- ESTIMATED NET WEIGHT: 1 lbs 0.45 kg		ROUGHNESS: 125µin [3.2µm] AVERAGE BREAK SHARP CORNERS / DEBURRS		DRAWN BY: EMMANUEL TREMBALY	PROJECT: DOOR HARDWARE KIT (YEAR-MONTH-DAY) 2014-06-02
SEE NOTE FASTENERS DETAIL		METRIC		CHECKED BY: FRANÇOIS DUSSAULT	REVISION STATUS: 1445PSDH72STB-00,R01
				FORMAT: B	SCALE: 1:1
				PAGE: 10/10	